

## REFURBISHED SPARES AND SERVICES

Please contact **Wayne Rushin** at **Midshire Sevens** on **0116 284 8970**

**Oil pump bored out oversize** – Pump bored out oversize for higher pressure, vanes reground, new springs, bead-blasted.  
or with part exchange for old pump

£25.00  
£20.00

**Heads** – Ground, core plugs removed, water jacket cleaned out, new core plugs, painted ready to fit:

early low compression  
late low compression  
high compression

£40.00  
£25.00  
£65.00

Part exchange to reduce prices may be available on these services.

# *Austin Seven Spare Parts Catalogue*



## A7 Components

18 Russell Avenue  
Dunchurch  
Rugby  
CV22 6PX

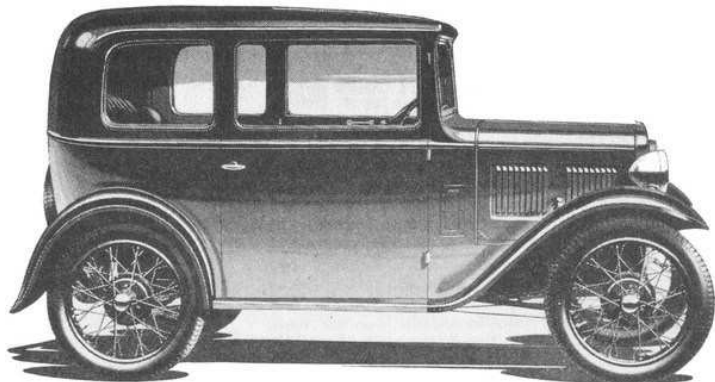
David Cochrane

01788 522033 david@a7c.co.uk

**www.a7c.co.uk**

Please note:

- Our prices include VAT where applicable.
- Cheques should be made payable to A7 Components Ltd.  
Please do not send us a cheque until you have been given the correct total for your order.
- Prices do not include postage and packing. Unless otherwise specified, parcels are sent by First Class post. Recorded Delivery or Special Delivery will be used for higher value items. Goods lost or damaged in transit are the customer's risk, unless you request that your goods are sent by Special Delivery or otherwise insured.
- We are usually open Monday to Saturday, 8.30 am to 8.30 pm. Callers are welcome, by appointment only please.
- Prices and availability may change due to circumstances beyond our control. New spares are continually being added to this list, so if the part you want isn't listed, please ask. OOS = Out of stock (temporarily we hope). POA = Price on application (please ask for a price for this part).
- Besides our range of new spares, we also have access to a large stock of original spares (some of which are shown in this list), e.g. chassis, engines, gearboxes, axles, lights, gauges, and even complete cars in need of restoration. Please contact Wayne Rushin at Midshire Sevens on 0116 284 8970 for up-to-date details.



1/2" spring washer	.05	ea
5/8" spring washer	.10	ea
1/2" brass repair washer	.05	ea
1/4", 5/16", 3/8" mudguard washer	.10	ea
1/2" repair washer	.05	ea
Fibre washer (various)	.05 - .25	ea
Woodruff key (various)	.35 - 1.15	ea
1/16" split pins	.25	10
5/64" split pins	.30	10
3/32" split pins	.40	10
1/8" split pins	.50	10

#### Other

BZ901/4	Weather vanes: Chummy / Ulster / Box / Ruby	30.00	ea
BZ911	Keyring with Chummy stamps	3.20	ea

#### SPORTS

BA161f	Nosecone for pressure-fed crank with oil-filter	Sports	195.00	ea
BA161p	Nosecone for pressure-fed crank		112.50	ea
C1-224	Crankshaft, 1 1/2" splash-fed (Phoenix)	Sports	725.00	ea
C1-224p	Phoenix crankshaft, 1 1/2" pressure-fed		780.00	ea
C1-225	Con-rods, 1 1/2"		710.00	set
C1-180	Con-rod (white-metal bearing type for 3-bearing crank)	36	12.25	ea
C1-285	Con-rod (shell-bearing type for 3-bearing crank)	36-39	POA	ea
BB51s	Rear main roller bearing (roller cage part of outer race)		70.50	ea
BB7d	Rear main lip seal (high-revving engines)		8.95	ea
BC82r	Cylinder head (aluminium Ricardo, 18mm)		240.00	ea
1A911r	Cylinder head (aluminium Ricardo, 14mm)		240.00	ea
C1-87h	Honda pistons +44, +54, +64		198.00	set 4
9E72a	Valve, oversize (29mm; exhaust quality)		7.65	ea
9E75	Valve springs, double		10.20	set 8
BC53f	Cam follower, reground (flat; exchange preferred)		4.40	ea
BD198	Fan belt, wide (sports/export)	29-39	5.70	ea
9E912	Double (inner) clutch springs	Sports	8.15	set
BP929	3-speed to 4-speed gearbox propshaft adaptor c/w bolts		23.50	ea
1A7306a	Hardy-Spicer propshaft (bespoke length)		OOS	
9C134a	Steering arm (lowered suspension)		75.00	ea
BM24r	Raked steering box (Ulster/Cup)		198.00	ea
BU2s	Front shock absorber assembly (sports/racing)	Sports	135.00	ea
B8-63/4e	Radius arm ends for lowered suspension		94.00	pair
9E93	Rear brake cable brackets for use with flattened springs		3.90	pair
BP120k	Crown wheel & pinion (5.67:1)		375.00	set
BO128t	Halfshaft with long taper (short, .890 journal)	Special	149.00	ea
1A7300a	Halfshaft (long, extended taper)	31-39	149.00	ea
1A7661a	Rear hub, outer (extended taper)	Special	87.00	ea
BP27s	Front (taper) end ball bearing (sealed)	Special	18.40	ea
BP96s	Front (taper) end ball bearing (sealed)	Special	18.40	ea
BS6s	Wheel nut (stainless steel)		2.95	ea
BD241	Radiator cap, chrome winged type	Nippy	15.90	ea

BT843	'Chummy in the Lane' poster		4.30	ea
BT844	Garage wallchart		5.60	ea

## MISCELLANEOUS

### Tools

BT1	Austin spanner 9/16" x 1/2" BSF (2nd-hand)	All	4.00	ea
BT2	Austin spanner 7/16" x 3/8" BSF (2nd-hand)	All	5.00	ea
BT3	Austin spanner 5/16" x 1/4" BSF (2nd-hand)	All	7.05	ea
BT1c	Austin spanners (BT1, BT2, BT3 & BT12 - 2nd-hand)	All	25.00	set
BT901	8 Whitworth combination spanners in storage wallet	All	18.90	set
BT8	Jet key for Zenith 22FZ carburettor	23-32	4.45	ea
BT11	Hub cap & steering column spanner	All	8.10	ea
BT24	Hub puller	All	14.75	ea
BT920	Flywheel puller	All	12.70	ea
BT921	Clutch cover plate assembly bolt	All	.50	ea
BT958	Brake shoe spring hook	All	14.20	ea
BT924	Kingpin greaser	All	9.20	ea
BT941	1/4" BSF thread insert/repair kit		25.60	ea
BT942	1/4" BSW thread insert/repair kit		26.60	ea
BT943	5/16" BSF thread insert/repair kit		26.60	ea
BT944	5/16" BSW thread insert/repair kit		27.60	ea
BT947	1/4" thread inserts		.35	ea
BT948	5/16" thread inserts		.50	ea
BT985	LED inspection lamp, head-mounted, variable brightness		4.95	ea
	3 piece wire brush set		3.00	set
	Stud and nut lock (10ml)		4.10	bottle
	5 litres 20/50 multigrade oil (collection only)		9.20	can

### Nuts, Bolts, Washers etc.

	2 BA nut		.05	ea
	1/4" BSF nut		.05	ea
	5/16" BSF nut		.10	ea
	3/8" BSF nut		.20	ea
	1/2" BSF nut		.40	ea
	1/4", 5/16" BSF castle nut	OOS		
	3/8", 1/2" BSF castle nut	OOS		
	1/4" BSF nyloc nut		.25	ea
	5/16" BSF nyloc nut		.30	ea
	3/8" BSF nyloc nut		.40	ea
	1/2" BSF nyloc nut		.80	ea
	1/4" BSW nut		.05	ea
	5/16" BSW nut		.10	ea
	1/4" BSF countersunk screw		.40	ea
	1/4" BSF bolts various	from	.30	ea
	5/16", 3/8" BSF bolts various	from	.60	ea
	1/4" BSW bolts various	from	.30	ea
	5/16", 3/8" BSW bolts various	from	.60	ea
	1/4", 5/16" washers		.30	pk 10
	3/8" washers		.35	pk 10
	1/2" washers		.25	pk 5
	3/16" spring washers		.10	pk 10
	1/4", 5/16", 3/8" spring washers		.25	pk 10

## ENGINE

### Crankcase

BA3	Timing gear case gasket (magneto)	23-28	1.40	ea
BA6	Timing gear cover gasket (magneto)	23-28	1.40	ea
BA18	Starting dog felt seal (magneto)	23-28	1.30	ea
BA19	Starting dog felt housing gasket (magneto)	23-28	.95	ea
BB37	Starting nut lockwasher	23-28	.35	ea
BB33	Magneto drive felt seal	23-28	1.20	ea
BB30	Magneto drive Woodruff key	23-28	.40	ea
BA161f	Nosecone for pressure-fed crank with oil-filter	Sports	195.00	ea
BA161p	Nosecone for pressure-fed crank	Sports	112.50	ea
BA120	Nosecone gasket (coil)	28-39	.55	ea
BA121	Nosecone bolt	28-39	.35	ea
BA125	Front bearing housing plate	28-39	2.35	ea
BA126	Front bearing cover plate screw	28-39	.30	ea
BA127	Front bearing cover plate tab washer	28-39	.35	ea
BA25	Cylinder block base stud	All	.75	ea
BA25s	Cylinder block base stud (stepped)		1.90	ea
BA26	Cylinder block base nut	All	.05	ea
BA38	Barrel nut	All	1.55	ea
BA25c	Block / crankcase studs, barrel nuts, nuts & spring washers	All	11.20	set
BA37	Oil baffle	All	5.40	ea
BA65f	Bell housing stud (BSF)	23-28	.75	ea
BA65	Bell housing stud (BSW)	28-39	.70	ea
BA65s	Bell housing stud (stepped)	All	1.90	ea
BA65c	Bell housing studs, nuts & spring washers	All	6.60	set
BA66	Nuts for bell housing studs (BSF/BSW)	All	.80	set
BA166	Flywheel pit cover (2nd-hand)	32-39	3.60	ea
BT920	Flywheel puller	All	12.70	ea
BA139	Oil jet (early)	23-36	OOS	
1A909	Oil jet (late)	36-39	OOS	
BA55	Oil-way plug (small)	All	1.25	ea
BA57	Oil-way plug (medium)	23-32	.70	ea
BA59	Oil-way plug (large)	All	.95	ea
BA168	Oil dipstick (2nd-hand)	32-39	4.90	ea
BA71	Sump (2nd-hand)	All	8.50	ea
9E57	Deep sump	Sports	POA	
BA72	Sump gasket	All	1.00	ea
BA73f	Sump bolt (BSF)	23-26	.95	ea
BA73	Sump bolt (BSW)	26-39	.95	ea
BA73o	Sump bolt (oversize BSW, same size head)		.85	ea
BA138	Oval sump washer	All	.25	ea
BA138o	Oval sump washer (oversize)		.25	ea
BA73c	Sump bolts, oval washers & spring washers	All	17.00	set
BA75g	Sump filter gauze	All	4.25	ea
BA76	Sump gauze bolt	All	.25	ea
BA79	Sump drain plug	All	4.80	ea
BA80	Drain plug fibre washer	All	.75	ea
BA93	Vernier coupling (magneto)	23-28	12.00	ea
BA94	Magneto fixing strap	23-28	23.90	ea
BA135	Camshaft front retaining bolt (square head)	28-39	2.95	ea

BA162	Petrol pump stud	32-39	.95	ea
BA68	Engine mounting bolt	23-33	1.50	ea
BA185	Front engine mounting stud	33-39	3.20	ea
BA177	Rear engine mounting bolt	33-39	1.50	ea
BA69	Nyloc nut for rear engine mounting bolt	All	.40	ea
BA180c	Engine mounting rubbers	33-39	7.10	set
BA181	Upper mount steel washer (1")	33-39	.35	ea
BA184	Lower mount steel washer (1")	33-39	OOS	ea
BA1f4	Front repair flange (4 hole) c/w screws	All	12.95	ea
BA1f8	Front repair flange (8 hole) c/w screws	All	15.30	ea
BG4	Dynamo housing gasket (magneto engine)	28-39	.95	ea
BG102	Dynamo gasket	28-39	.25	ea
BG106	Dynamo housing gasket (coil engine)	28-39	.30	ea
BG112	Dynamo housing cover	28-39	.75	ea
BG113	Dynamo housing cover gasket	28-39	.25	ea
<b>Oil System</b>				
BA163	Oil pressure relief valve bolt	33-39	3.55	ea
BA52	Fibre washer for above	All	.35	ea
BA51	Oil pressure spring	All	.95	ea
BA53	Oil pressure ball	All	.50	ea
BA163c	Complete relief valve assembly	33-39	5.00	set
BA44	Oil filler cap, magneto engine	23-28	8.10	ea
BA130	Oil filler cap (coil)	29-39	19.60	ea
BA101c	Oil pump (2nd-hand)	All	10.60	ea
BA113	Oil pump key	All	.60	ea
BA108	Oil pump vane springs	All	1.70	pair
BA103	Oil pump gasket	All	.40	ea
BA105	Oil pump bolt	All	.75	ea
9C223	Oil pump pickup for deep sump	Sports	POA	
BA42	Oil pump spindle cover	All	.90	ea
BA43	Oil pump cover gasket	All	.30	ea
BA116	Oil gauge pipe union	All	2.05	ea
BA139	Oil jet (early)	23-36	OOS	
1A909	Oil jet (late)	36-39	OOS	
BA55	Oil jet cover plug	All	1.25	ea
BA57	Oil-way plug (medium)	23-32	.70	ea
BA59	Oil-way plug (large)	All	.95	ea
BA168	Oil dipstick (2nd-hand)	32-39	4.90	ea
<b>Crankshafts, Conrods &amp; Pistons</b>				
BB1	Crankshaft, 1 1/8" splash-fed (Phoenix)	23-28	POA	
C1-179	Crankshaft, 3 bearing	36-39	POA	
BB45	Crankshaft, 1 5/16" splash-fed (Phoenix)	28-36	POA	
BB45p	Crankshaft, 1 5/16" pressure-fed (Phoenix)	28-36	POA	
C1-224	Crankshaft, 1 1/2" splash-fed (Phoenix)	Sports	725.00	ea
C1-224p	Crankshaft, 1 1/2" pressure-fed (Phoenix)	Sports	780.00	ea
BB4	Timing gear (EN24 steel, sold with BB40)	28-39	220.00	set
BC43	Con-rod, 1 1/8" (2nd-hand)	23-29	3.05	ea
BC67	Con-rod, 1 5/16" (2nd-hand)	29-36	17.90	ea
BC67p	Con-rods, 1 5/16" (Phoenix)	29-36	POA	
C1-225	Con-rods, 1 1/2" (Phoenix)	Sports	710.00	set
BC44	Big end bolt (EN24U)	All	3.60	ea

	Lucas vacuum windscreen wiper motor (fully reconditioned)	23-34	149.50	ea
2H7784a	Wiper blade 7" or 8" long, clip on	All	4.20	ea
2H7784	Wiper blade 8" long, rubber peg fixing	All	6.00	ea
BW909	Wiper blade rubber retaining peg	All	.30	ea
2H7788	Wiper arm, chrome (adjustable to fit all)	All	15.95	ea
BW908	Vacuum wiper hose (silicon)	23-34	.75	foot
BW922	Rectangular suction mirror – flat glass, black plastic back		5.95	ea
2H8043g	Sun visor 'glass' (green plastic) for Ruby/Pearl	34-39	5.90	ea

## BOOKSHOP

### Books

BT801	Austin Seven Source Book (Purves)		OOS	
BT802	Austin Seven Workshop Manual (Woodrow)		46.00	ea
BT803	Austin Seven Companion (750 Motor Club)		17.50	ea
BT804	Original Austin Seven: The Restorer's Guide (Rinsey Mills)		24.50	ea
BT805a	The Austin Seven (R J Wyatt – 1st edn)		24.50	ea
BT805b	The Austin Seven (R J Wyatt – 2nd edn)		21.50	ea
BT805c	The Austin Seven (R J Wyatt – 3rd edn)		23.00	ea
BT807	A Digest of Technical Articles (PWA7C)		8.00	ea
BT808	Tuning and Maintenance of the Austin Seven		4.00	ea
BT811	A Guide to Building Reproduction Austin Ulsters (Gould)		20.90	ea
BT812	A Guide to the Austin "65" and Nippy (Gould)		20.90	ea
BT813	A Guide to Building Austin Imp Specials (Gould)		16.80	ea
BT823	Austin Seven & Ten Road Test Portfolio		19.95	ea
BT824	Austin Seven Competition History		60.00	ea
BT826	Motor Sport Book of the Austin Seven		9.80	ea
BT827	Austin From The Inside (Freddie Henry)		4.50	ea
BT851	Austin Seven Cigarette and Trade Cards		11.50	ea
BT852	Coleman's Drive (paperback)		14.95	ea
BT853	Austins Over The Andes (Vince Leek)		17.50	ea
BT857	Ruby by Colin Thompson		19.50	ea
BT870	A7CA magazine back issues (1976D, 1982A/B, 1985D, 1996A)		.40	ea
BT873	Pram Hood Register Rumbings back issues (various)		.25	ea

### Handbooks & Spare Parts Lists

352i	Handbook - Tourer AC Body	1925	7.00	ea
715A	Handbook - Saloon RL Body Coil Engine	May 30	7.00	ea
1400C/D	Handbook - Ruby, etc (2nd-hand)	Aug 36	14.00	ea
BT860	Zenith 22FZ handbook	1930	7.00	ea
BT862	Zenith 26VA diagram & technical notes	32-39	1.20	ea
1029	List of Spare Parts	Aug 33	7.00	ea
1406C	List of Spare Parts	Nov 36	7.00	ea
1521	List of Spare Parts - Body Parts	Apr 37	6.00	ea
1586A	List of Spare Parts	Oct 38	7.00	ea

Second-hand original Handbooks and Lists of Spare Parts are occasionally available

### Brochures & Posters

BT831	The Austin Seven Comes of Age	All	4.90	ea
BT832	As I was Going to St Ives	All	6.35	ea
BT833	The Austin Seven Covers the Country	All	1.45	ea
BT841	Longbridge Bodies poster		4.90	ea
BT842	Special bodies poster		3.60	ea

BM183k	Trafficator knob	34-39	13.20	ea	BC45a	Big end nuts, self locking	All	2.75	set 8
BBG902	Dial faces stick-on replacement (state which required)		2.95	ea	BC56	Pistons, complete with rings & pins (std, .020, .030, .040, .060, .080)	All	160.00	set
BG961/9	Patent plate (Magneto & late coil only)	All	7.05	ea	C1-87h	Honda pistons +44, +54, +64	Sports	198.00	set
BE65/6	Choke swivel bracket (24-29 / 29-32)	24-32	9.00	ea	BC47	Little end bolts	All	1.65	set 4
BE69	Choke control ring (nickel/chrome)	23-32	4.40	ea	BC48	Little end lock washers	All	.90	set 4
BG174	Starter/choke pull knob (Box, etc)	32-34	4.70	ea	BB37	Front main lock washer	All	.35	ea
BG175	Starter/choke pull bulkhead cable bracket (Box, etc)	32-34	2.35	ea	1A894	Centre main lock washer	36-39	.45	ea
B8-34	Choke pull	Ulster	30.90	ea	BB22	Front crankshaft key	29-39	.45	ea
BG160c	Ignition switch retaining wire clip and gasket	31-39	4.70	ea	BJ2	Rear crankshaft key	All	.65	ea
BG160k	Ignition spade key	31-39	.95	ea	BA125	Front main bearing cover plate	28-39	1.80	ea
<b>Rubber, Leather &amp; Chains</b>					BA126	Front bearing cover plate screw	28-39	.30	ea
BN903	Brake/clutch pedal rubber (Chummy/Box)	23-34	4.35	ea	BA127	Front bearing cover plate tab washer	28-39	.35	ea
BN96	Brake/clutch pedal rubber (Ruby)	34-39	3.70	ea	BB6	Felt seal plate (2nd-hand)	23-28	1.35	ea
BF978	Accelerator pedal rubber	34-39	3.05	ea	BB7	Rear main felt seal	23-28	1.95	ea
BN96c	Pedal rubbers (Ruby, etc.)	34-39	10.40	set	BB7a	Rear main lip seal (1 <sup>1</sup> / <sub>8</sub> "	23-29	3.00	ea
2H6560	Bonnet catch rubber sleeve	All	1.55	ea	BB7b	Rear main lip seal (1 <sup>5</sup> / <sub>16</sub> " – early)	29-30	3.00	ea
2H5905	Bonnet buffer)	34-39	1.85	ea	BB7c	Rear main lip seal (1 <sup>5</sup> / <sub>16</sub> "	30-39	3.00	ea
2H6161	Bonnet corner rubber (all models except Chummy)	30-39	1.65	ea	BB7d	Rear main lip seal (high-revving engines)	Sports	8.95	ea
BW931	Bonnet rubber seal (Chummy/Box)	23-34	1.00	foot	BB10	Rear main bearing housing, magneto engine (2nd-hand)	23-29	3.90	ea
BW932	Bonnet rest webbing, front	34-39	1.40	foot	BB10s	Rear main bearing housing machined for seal plate BB47a	23-29	11.80	ea
BW933	Bonnet rest rubber/webbing, rear	34-39	2.50	foot	BB46	Rear main bearing housing, coil engine (2nd-hand)	29-39	3.90	ea
BV985	Toolbox lid rubber knob (Ruby)	34-39	3.15	ea	BB47	Rear main seal plate (2nd-hand)	29-39	2.35	ea
BV975	Door buffer (Box, etc)	30-34	2.15	ea	BB47a	Rear main seal plate (for modern oil seal)	29-39	16.25	ea
2H8000	Door buffer (Early (RQ) Ruby)	34-36	2.70	ea	BB49	Rear main thrower (2nd-hand)	29-39	2.40	ea
2H8001	Door buffer (Late (RR) Ruby)	36-39	2.70	ea	BB11	Rear main bearing housing gasket (thin)	All	.25	ea
BV977	Door check-straps (various colours; Chummy/Box)	23-34	11.70	pair	BB48	Oil seal plate gasket (thick)	All	.45	ea
C1-67	Door pull chains (various colours; Box/Ruby)	30-39	19.00	pair	BB50	Rear main bolts (shallow head)	All	.60	ea
3A3601r	Top door hinge seal (Ruby/Pearl)	34-39	1.45	ea	BB13d	Rear main seal plate tab washer	All	.40	ea
BV932	Running board rubber motif		6.05	ea	BJ3	Flywheel nut (1 <sup>1</sup> / <sub>8</sub> "	23-29	2.45	ea
1A5382	Bumper iron rubber ferrule (Ruby)	34-39	4.30	ea	BJ4	Flywheel nut lock washer (1 <sup>1</sup> / <sub>8</sub> "	23-29	.35	ea
1A5383	Rubber blanking piece for cars without bumpers (Ruby)	34-39	4.30	ea	BJ29	Flywheel nut (1 <sup>5</sup> / <sub>16</sub> "	29-39	2.90	ea
BW951	Hood rest rubbers (Chummys, Tourers, 2 seaters)		3.35	ea	BJ30	Flywheel nut lock washer (1 <sup>5</sup> / <sub>16</sub> "	29-39	.35	ea
BW952	Late 4 seater tourer hood buffers	34-39	9.90	pair	BB913	Coil engine tab washer set	29-39	2.50	set
BW953	Pearl (early C type) hood rest buffer	34-36	2.50	ea	<b>Engine Bearings</b>				
BW954	Pearl (late CA type) hood rest buffer	36-39	2.95	ea	BB15	Front main ball	23-33	14.80	ea
2H5014	Sliding roof channel buffer	34-39	.85	ea	BB17	Front main roller	23-33	46.50	ea
BR153	Low frame rear axle bump stop	34-39	9.20	ea	BB15a	Front main A/C (alternative to ball & roller)	23-35	94.00	pair
BK943	Handbrake gaiter (Box, etc; various colours)	30-34	11.70	ea	BB68	Front main A/C	35-39	107.30	pair
3A9097	Handbrake gaiter (Ruby, etc; various colours)	34-39	12.80	ea	BB17	Rear main roller	23-29	46.50	ea
BK944	Handbrake gaiter plate (Box, etc)	30-34	3.55	ea	BB51	Rear main roller	29-39	47.60	ea
<b>Windscreen</b>					BB51s	Rear main roller (roller cage part of outer race)	Special	70.50	ea
BW902	Seal between top and bottom glass (Chummy/Tourer)	23-34	1.10	foot	BB16	Timing gear ball (magneto engine)	23-28	5.90	ea
BW903	Seal for bottom of windscreen frame (Chummy/Tourer)	23-34	1.10	foot	1A885/6	Centre main shell bearings (.020, .030, .040, .050)	36-39	26.50	pair
BW905	Window surround rubber seal (Top Hat & RK saloons)	26-31	.90	foot	1A919	Big end shell bearings (Std, .040, .050, .060)	36-39	49.80	set 8
BW904	Windscreen surround rubber seal (RP Box)	32-34	1.30	foot	BB19	Camshaft centre bearing roller race	23-36	7.05	ea
BW913	Windscreen pillar base seal (LWB Tourer)	32-39	2.25	ea	BB20	Camshaft centre bearing rollers	23-36	3.85	set 9
BW914	Windscreen end caps (Tourer; chromed)		4.10	ea	<b>Cylinder Head</b>				
C1-61r	Windscreen catch rubber buffer (Ruby Mk 1)	34-35	.60	ea	BC28	Cylinder head (early 18mm)	23-28	POA	
	Rear window glass (Box)	30-34	16.50	ea	BC82	Cylinder head (later 18mm)	29-36	5.10	ea
2H7104s	Window winder spring (Box/Ruby)	30-39	5.90	ea	BC29	Cylinder head gasket (low comp head – Payens)	23-36	22.50	ea
BW918	Window winder clutch spring (Wydor/Box/Ruby)	29-39	OOS						

1A911	Cylinder head (standard 14mm)	36-39	POA		BD282w	Radiator winged wheel badge (cowled radiator)	34-39	20.00	ea
1A912	Cylinder head gasket (high comp head – Payens)	36-39	22.50	ea	BD282a	Arrow badge for cowled radiator	34-39	14.00	ea
BC82r	Cylinder head (aluminium Ricardo, 18mm)	Sports	240.00	ea	BD943	'Austin' radiator script (nickel/chrome, c/w fixing screws)	26-34	16.60	ea
1A911r	Cylinder head (aluminium Ricardo, 14mm)	Sports	240.00	ea	BD944	'Austin Seven' radiator script	34-39	24.00	ea
BC982	Head core plug	30-39	.45	ea	BD951/3	Radiator bottom support brackets (Chummy, etc)	23-30	21.20	pair
BC18	Top water outlet manifold (early)	23-36	9.60	ea	<b>Exterior</b>				
BC19	Water outlet manifold gasket (early)	23-36	.50	ea	1A5374	Front bumper horseshoe bracket	34-39	18.80	ea
BC20a	Water outlet manifold stud (stainless)	23-36	1.20	ea	2H7130	Door handle with lock & keys	34-39	50.70	ea
BC20c	Water outlet manifold stud & nut	23-36	1.25	set	2H7128	Door handle without lock	34-39	38.40	ea
BC20s	As above, stepped		2.40	ea	3A5478	Spare wheel cover lock escutcheon	34-39	7.90	ea
9E16	Top water outlet manifold (late)	36-39	9.60	ea	3A1890	Spare wheel cover tab plates	34-39	4.70	pair
9E45	Water outlet manifold gasket (late)	36-39	.40	ea	2H7183a	Bootlid T-key	34-39	1.85	ea
BG917	Spark plug, NGK 18mm (14mm hex body)	23-36	5.75	ea	BW883	Numberplate	All	5.90	ea
BG914	Spark plug, NGK 14mm	36-39	2.95	ea	BW984	Front numberplate brackets (Box & late Chummy)		4.70	pair
BC6c	Cylinder head nuts	All	1.35	set 14	C1-36c	Bonnet catch (Chummy, etc.)	23-30	12.00	ea
BC7c	Cylinder head washers	All	.35	set 14	C1-36b	Bonnet catch (Box, etc.)	30-34	14.10	ea
BD42	Radiator top hose (Chummy, etc)	23-28	4.00	ea	C1-36	Bonnet catch (Ruby, etc.)	34-39	12.00	ea
BD43	Radiator bottom hose (Chummy, etc)	23-28	4.60	ea	2H6560	Bonnet catch rubber sleeve	All	1.55	ea
BD103	Radiator top hose (late Chummy, Box, etc)	28-34	4.00	ea	2H5905	Bonnet buffer	34-39	1.85	ea
BD122	Radiator bottom hose (late Chummy, Box, etc)	28-34	4.60	ea	2H6161	Bonnet corner rubber (all models except Chummy)	30-39	1.65	ea
BD43	Radiator top & bottom hoses (Ruby, etc)	34-39	4.60	ea	2H7250	Wing piping	30-39	1.45	ft
BD44	Enots radiator hose clip (nickel/brass)	23-39	7.75	ea	1A5375p	Bumper blade top plug	34-39	14.00	ea
BD44j	Zinc-plated hose clip	All	.60	ea	1A5375b	Oval bumper bolt	34-39	5.30	ea
<b>Cylinder Block</b>					1A5382	Bumper iron rubber ferrule (Ruby)	34-39	4.30	ea
BC75	Cylinder block (state standard or sports spec)	All	POA		1A5383	Rubber blanking piece for cars without bumpers (Ruby)	34-39	4.30	ea
BC901	Cylinder liner	All	19.20	ea	BS912	Vintage style valve dust cap (two part chrome; fits straight onto modern tubes)	30-39	8.80	ea
BC13	Cylinder block base gasket	All	1.00	ea	BS911	Vintage style valve dust cap (single part nickel /chrome; fits straight onto modern tubes)	All	5.90	ea
BC14b	Block core plug (knock in)	31-39	.80	ea	BS914	Dust cap nut adaptor (to fit original dust caps; nickel/chrome)	All	2.35	ea
BC24	Valve guide, flanged	23-31	3.85	ea	<b>Interior</b>				
BC74	Valve guide, plain	31-39	2.35	ea	BV951	Austin Car No. & Always Quote This Number plates	23-27	13.00	set
BC25	Cylinder block breather	All	3.30	ea	BV953	Chassis & Car Number plates	27-39	3.25	pair
BC5	Head stud, standard length (EN16T)	All	.95	ea	BV954	Car Number plate	27-39	1.55	ea
BC5c	Standard head studs, nuts & washers	23-36	15.00	set	3A628p	'Dependability' bonnet stay plate (red/silver)	34-39	4.45	ea
BC5s	Head stud, standard length (stepped)	as req'd	2.50	ea	BV961	Seat hinge (Chummy, etc)	24-30	5.90	ea
9E28	Head stud, long (EN16T)	36-39	.95	ea	BV962	Seat hinges (Box, etc)	30-34	11.75	pair
9E28c	Late head studs, nuts & washers	36-39	15.00	set	3A5143	Sliding roof handle	34-39	3.55	ea
9E28s	Head stud, long (stepped)	as req'd	2.15	ea	BV971	RN Saloon sliding roof stops (plastic)	31-32	2.55	pair
BD47	Side water inlet manifold	All	15.25	ea	2H5014	Sliding roof channel buffer	34-39	.85	ea
BD48	Water inlet manifold gasket	All	.75	ea	5B271	Rear blind knob	30-39	4.10	ea
BC21a	Water inlet manifold stud (stainless; long)	All	1.35	ea	5B272	Rear blind hook	30-39	5.30	ea
BC22a	Water inlet manifold stud (stainless; short)	All	1.20	ea	2H6364	Interior door pull handle	34-39	12.65	ea
BC21c	Side water manifold studs & nuts	All	2.70	set	BV978	Door shut plates (Chummy)	23-31	17.60	pair
BC21s	Water inlet manifold stud (stepped; long)	as req'd	2.50	ea	3G3392	Door shut plates (Box/Ruby)	30-39	13.20	ea
BC22s	Water inlet manifold stud (stepped; short)	as req'd	2.40	ea	BV976	Door handle nut (Late Chummy/Box)	30-34	1.80	ea
BE29a	Exhaust manifold gasket	All	2.80	ea	BV974	Door hinge (1 1/8" x 2" wide, undrilled)	23-29	19.30	ea
BC8	Manifold stud, medium (EN16T)	23-32	.70	ea	BV982	Battery box (under seat)	23-34	11.75	ea
BC9	Manifold stud, long (EN16T)	23-32	.95	ea	<b>Dashboard &amp; Controls</b>				
BC10	Manifold stud, short (EN16T)	23-32	.85	ea	BM128	Gas/ignition control plate	23-32	19.90	ea
BC76	Manifold stud, standard (EN16T)	32-39	.70	ea					
BC11	Manifold nut (brass)	All	.60	ea					

BN96	Brake/clutch pedal rubber (Ruby)	34-39	3.70	ea
BF978	Accelerator pedal rubber	34-39	3.05	ea
BN96c	Pedal rubbers (Ruby, etc.)	34-39	10.40	set
BF26	Accelerator shaft spring (up-draught carb)	23-32	3.75	ea
BF82	Accelerator shaft spring (side-draught carb)	34-39	4.40	ea
BN39	Clutch pedal spring (3-speed gearbox)	23-32	3.20	ea

### Shock Absorbers

BU902c	Hartford shock absorber complete (front)	24-25	120.00	ea
BU923c	Hartford shock absorbers complete (rear)	24-25	180.00	pair
BU5b	Centre bolt (front)	25-39	3.95	ea
BU8	Star spring	25-39	3.85	ea
BU6	Nut & lock nut (front)	25-39	.60	ea
BU9	Friction disc (oiled beechwood)	All	5.80	ea
BU36	Front axle link bolt	27-37	6.10	ea
BU43c	Nuts & washers for above	27-37	.85	set
BU40	Domed link bolt with peg	25-39	3.20	ea
BU34a	Centre bush (front/rear arm)	25-39	.60	ea
BU2s	Front shock absorber assembly (sports/racing)	Sports	135.00	ea
BU23	Rear shock absorber arm (long)	25-34	40.90	ea
BU24b	Centre bolt (rear)	25-39	3.95	ea
BU25	Nut & lock nut (rear)	25-39	.60	ea
BU30	Spring plate	25-39	OOS	
BU65	Brass disc (rear only)	28-39	2.95	ea
BU27	Spring (rear)	25-39	2.35	ea
BU28	Spring cup (inner)	25-39	1.80	ea
BU29	Spring cup (outer)	25-39	OOS	
BU49	Connecting link (front & rear, short)	25-39	3.50	ea
BU66	Connecting link (Ruby etc rear, medium)	34-39	4.00	ea
B8-6	Connecting link (sports/export rear, long)	Sports	4.50	ea
BU50	Rubber bush for connecting links	25-39	.65	ea
BU12	Fibre washer for above	25-39	.10	ea
BU14	Key washer	25-39	.35	ea

### BODYWORK

#### Radiator

BD42	Radiator top hose (Chummy, etc)	23-28	4.00	ea
BD43	Radiator bottom hose (Chummy, etc)	23-28	4.60	ea
BD103	Radiator top hose (late Chummy, Box, etc)	28-34	4.00	ea
BD122	Radiator bottom hose (late Chummy, Box, etc)	28-34	4.60	ea
BD43	Radiator top & bottom hoses (Ruby, etc)	34-39	4.60	ea
BD44	Enots radiator hose clip (nickel/brass)	23-39	7.75	ea
BD44j	Zinc-plated hose clip	All	.60	ea
BD100	Radiator drain tap	All	13.60	ea
BD40	Radiator cap (1¼" dia thread)	23-29	17.30	ea
BD180	Radiator cap (1½" dia thread)	29-32	17.30	ea
BD241	Radiator cap, chrome winged type	33-34	15.90	ea
BD279	Radiator cap, brass under cowl type	34-39	17.60	ea
BD941w	Boyce motometer (chrome with wreath border)		45.70	ea
BD941c	Calormeter as above (chrome with plain border)		45.70	ea
BD941b	Calormeter as above (brass with plain border)		45.70	ea
BD98w	Radiator winged wheel badge (nickel/chrome)	23-32	15.80	ea

BC12	Manifold washers	All	.20	set 7
BC9c	Up-draught manifold studs, brass nuts & washers	23-32	9.20	set 7
BC76c	Side-draught manifold studs, brass nuts & washers	32-39	10.50	set 7
BC9s	Manifold stud, long (stepped)	as req'd	1.20	ea
BC10s	Manifold stud, short (stepped)	as req'd	1.25	ea
BA38	Barrel nut	All	1.55	ea

### Camshaft

BB54	Camshaft	32-39	POA	
BB40	Timing gear (EN8 steel, sold with BB4)	28-39	220.00	set
BD111	Camshaft nut (small)	28-39	.40	ea
BB22	Camshaft key	All	.45	ea
BB43	Camshaft gear nut	28-39	1.95	ea
BB44	Camshaft lock washer (coil)	28-39	.30	ea
BB19	Camshaft centre bearing roller race	23-36	7.05	ea
BB20	Camshaft centre bearing rollers	23-36	3.85	set 9
BA135	Camshaft front retaining bolt (square head)	28-39	2.95	ea
BA32	Camshaft rear bearing bolt	All	.30	ea
BA34	Camshaft rear bearing gasket	23-32	.25	ea
BA170	Camshaft rear bearing gasket	33-39	.25	ea
BB42	Camshaft oil thrower (2nd-hand)	28-39	2.40	ea
BC53g	Cam followers, reground (standard)	All	4.40	ea
BC53f	Cam followers, reground (flat)	Sports	4.40	ea

### Valve Gear

BC61	Valve, split collet type (exhaust quality)	23-34 / 38-39	6.65	ea
BC34	Split collet	23-34 / 38-39	1.80	ea
BC33	Valve cup, collet type (for single or double springs)	23-34 / 38-39	1.90	ea
BC107	Valve, pin type	35-37	7.15	ea
BC108	Valve pins	35-37	2.80	set 8
BC109	Valve cup, pin-type	35-37	.90	ea
9E72a	Valve, oversize (29mm; exhaust quality)	Sports	7.65	ea
BC32	Valve springs, single	All	5.30	set 8
9E75	Valve springs, double	Special	10.20	set 8
BC24	Valve guide, flanged	23-31	3.85	ea
BC74	Valve guide, plain	31-39	2.35	ea
BC55	Tappet bolt (exchange)	23-39	1.20	ea
BC60	Tappet locknut	All	POA	
BC53g	Cam followers, reground (standard)	All	4.40	ea
BC53f	Cam followers, reground (flat)	Sports	4.40	ea
BC36	Valve chest cover stud	All	.70	ea
BC37	Valve cover thumbscrew	All	3.20	ea
BC38	Valve chest cover cork gasket	23-30	1.45	ea
BC70	Valve chest cover, late	30-39	5.00	ea
BC72	Valve chest cover cork strip	30-39	1.45	ea

### Manifolds & Exhaust System

BE21	Inlet manifold, up-draught (2nd-hand)	23-32	5.30	ea
BE22a	Inlet / exhaust manifold gasket	23-32	.75	ea
BE28	Carb / inlet manifold gasket, u/d	23-32	.35	ea
BE122a	Carburettor / manifold gasket, s/d	32-39	.75	ea
BE30	Exhaust manifold, up-draught (2nd-hand)	23-32	25.00	ea
BE117	Exhaust manifold, side-draught (2nd-hand)	32-39	10.60	ea
BE29a	Exhaust manifold gasket	All	2.80	ea

BC8	Manifold stud, medium (EN16T)	23-32	.70	ea	BR64c	Rear spring bolt (thin head) nyloc nut/washer (middle)	26-	2.35	ea
BC9	Manifold stud, long (EN16T)	23-32	.95	ea	BR171	Rear spring bolt (thin head) nyloc nut/washer (late)	-39	OOS	
BC10	Manifold stud, short (EN16T)	23-32	.85	ea	BR63	Rear spring packing (thick)	All	1.55	ea
BC76	Manifold stud, standard (EN16T)	32-39	.70	ea	BR81	Rear spring packing (thin)	All	1.75	ea
BC11	Manifold nut (brass)	All	.60	ea	BM197	Radius arm waisted bolt	All	OOS	
BC12	Manifold washers	All	.20	set 7	BM196	Radius arm waisted bolt spring	34-39	2.85	ea
BC9c	Up-draught manifold studs, brass nuts & washers	23-32	9.20	set 7	BM116	Radius arm ball pivot bushes	All	6.05	pair
BC76c	Side-draught manifold studs, brass nuts & washers	32-39	10.50	set 7	BM114	Radius arm nut	All	2.20	ea
BC9s	Manifold stud, long (stepped)	as req'd	1.20	ea	BM115	Radius arm spring washer	All	.05	ea
BC10s	Manifold stud, short (stepped)	as req'd	1.25	ea	BR947	Cow horn bracket (offside)	23-34	14.70	ea
BE52a	Exhaust flange gasket	All	1.80	ea	BR848	Cow horn fixing bolts	23-34	.50	ea
BE47c	Exhaust flange bolts, nuts & washers	All	3.95	set 4	9E93	Rear brake cable brackets for use with flattened springs	Sports	3.90	pair
9E71p	Plate for making 'banana' exhaust system	Special	11.75	ea	1A5523	Torque tube hanger brackets (late Ruby)	37-39	2.40	pair
BE82p	Plate for exhaust downpipe	All	3.45	ea	2H1051	Silentbloc bush for torque tube socket	36-39	17.70	ea
<b>Fan Gear</b>					BR153	Low frame rear axle bump stop	34-39	9.20	ea
BD39	Fan belt (magneto engine)	23-28	5.70	ea	BX1	<sup>1</sup> / <sub>8</sub> " BSP straight grease nipple	All	.45	ea
BD109	Fan belt (coil engine)	28-39	5.20	ea	BR51	<sup>1</sup> / <sub>8</sub> " BSP angled grease nipple	23-36	.60	ea
BD198	Fan belt, wide (sports/export models)	29-39	5.70	ea	2H1129	<sup>5</sup> / <sub>16</sub> " BSF angled grease nipple (Girling front axle)	36-39	.90	ea
BD105	Fan blade (coil engine)	28-39	16.15	ea	BS925	Staybrite wheel centre (hub cap)	31-36	OOS	
BD23	Fan blade screws & washers	All	1.35	set 2	BS928	Wheel centre (hub cap)	36-39	20.30	ea
BD25	Top fan pulley (magneto engine)	23-28	19.40	ea	BS920	3.50x19" tyre (Longstone 3-block vintage-style tread)	24-34	56.40	ea
BD106	Top fan pulley (early coil engine)	28-32	POA		BS919a	3.50x19" tyre (Avon Sidecar Triple Duty MkII)	24-34	58.20	ea
BD220	Top fan pulley (late coil engine)	33-39	15.20	ea	BS919c	3.50x19" tyre (Cheng Shin)	Trials	40.60	ea
BD33	Top fan pulley felt seal	All	.30	ea	BS917e	4.00x17" tyre (Excelsior)	34-39	82.30	ea
BD49/50	Top fan pulley bushes	23-36	OOS		BS917w	4.00x17" tyre (Waymaster)	34-39	76.40	ea
1A905	Top fan pulley bush (late)	36-39	OOS		BS929	19" inner tube	24-34	9.70	ea
BD108	Fan spindle (coil engine, long)	28-32	POA		BS927	17" inner tube	34-39	9.70	ea
BD221	Fan spindle (coil engine, short)	32-39	2.35	ea	BS939	19" rim tape	24-34	1.30	ea
BD34	Fan spindle bracket (magneto engine)	23-28	15.95	ea	BS937	17" rim tape	34-39	1.30	ea
BD29/30	Fan spindle washers (steel & brass)	All	.10	set 2	<b>Steering &amp; Pedals</b>				
BD68c	Fan spindle cotter, washer & nut	All	1.30	ea	BM24r	Raked steering box (Ulster/Cup)	Sports	198.00	ea
BX1	Fan spindle grease nipple	All	.45	ea	BM17c	Steering column clamp bracket	24-30	15.55	ea
BD26	Bottom fan pulley (magneto engine)	23-28	11.15	ea	BM37	Steering box adjuster lockwasher	23-36	.30	ea
BD107	Bottom fan pulley (coil engine)	28-39	15.25	ea	BM52	Steering box double tab washer	23-36	.40	ea
BD111	Bottom fan pulley nut	28-39	.40	ea	BM53	Steering box cover bush	23-36	10.00	ea
BD112	Bottom fan pulley spring washer	28-39	.05	ea	BM54	Steering box cover felt seal	23-36	.55	ea
BD169	Bottom fan pulley felt seal	28-39	1.00	ea	2K5288	Steering box cover cork seal	36-39	.55	ea
<b>Starting Handle Components</b>					BM56	Steering box cover gasket	23-36	.50	ea
BD14	Starting handle (mag engine)	23-28	38.60	ea	BM127	Steering wheel retaining nut	29-39	1.90	ea
BA18	Felt seal for starting nut (starter dog; magneto)	23-28	1.30	ea	BM128	Gas/ignition control plate	23-32	19.90	ea
BB52	Starting nut (starter dog), coil	30-39	5.10	ea	BM136	Control bracket stator tube	All	14.50	ea
BB37	Starting nut lock washer	All	.35	ea	BM130	Ignition control stator tube	23-34	16.80	ea
BD219	Starting handle shaft		POA		BM129	Throttle control stator tube	23-34	15.75	ea
BD8	Starting handle spring (magneto)	23-28	1.45	ea	BM96a	Steering arm (incl. p&p)	All	75.00	ea
BD120	Starting handle spring, early coil	28-31	1.55	ea	9C134a	Steering arm (lowered suspension)	Sports	75.00	ea
BD205	Starting handle spring (later coil, short)	32-34	1.85	ea	BM107c	Drag link set	All	13.70	ea
BD277	Starting handle spring (Ruby, long)	34-39	1.95	ea	(ball pin, cups, spring, castle nut & split-pin)				
BD201c	Cotter, washer & nut	28-39	1.90	ea	BM68	Brake pedal shaft taper washer	All	2.35	ea
<b>Fuel System</b>					BN3	Brake/clutch pedal metal pad	23-34	5.90	ea
BE3a	Petrol cap, screw-on type (scuttle tank)	23-26	14.10	ea	BN4	Brake/clutch pedal pad conical nut	23-34	2.35	ea
BE20	Petrol cap, spring clip type (scuttle tank)	26-30	19.70	ea	BN903	Brake/clutch pedal rubber (Chummy/Box)	23-34	4.35	ea

BG294u	DK4 spindle bush	34-39	4.60	ea
BG294m	DK4 control clamp	34-39	8.10	ea
BG140g	Distributor gear (Lucas)	28-39	13.50	ea
BG294g	Distributor gear (Bosch)	28-39	13.50	ea
BG160k	Ignition spade key	31-39	.95	ea
BG925	2.5V volt 0.2A ignition bulb		.75	ea
<b>Lamps</b>				
BG193c	Headlamp glass wire retaining clip		.30	ea
BG193p	Headlamp swivel cup <sup>5</sup> / <sub>8</sub> " hole (pre-Ruby; painted black)	23-34	2.95	ea
BG193q	Headlamp swivel cup (Ruby; painted black)	34-39	2.95	ea
BG193h	Headlamp hollow bolt <sup>5</sup> / <sub>8</sub> " diameter, nuts, washers, lock washers (pre-Ruby)	29-34	5.90	ea
BG193b	Headlamp bolt & nut (Ruby)	34-39	4.70	ea
BG262	Front side light (Ruby)	34-39	40.60	ea
BG262p	Side light swivel cup (Ruby)	34-39	1.80	ea
BG87r	Rear lamp (Chummy/Box)	23-33	39.30	ea
BG87a	As above but with amber lens		34.00	ea
BG987	Improved visibility lens for rear lamp	23-34	8.45	ea
BG197	Rear light ('pork-pie' type; late Box, Ruby, etc.)	33-39	45.80	ea
BG197g	Replacement glass for 'pork-pie' lamp	33-39	7.05	ea
BG907	Direction indicator lamp (state orange or clear lens)		14.80	ea
BG982	Reflector, chrome bezel 2" dia, rear stud fixing		11.85	ea
BG920	6V 6/23W halogen bulb for scuttle-mounted lamp	23-28	10.25	ea
BG921	6V 25/25W halogen headlight bulb	29-39	10.25	ea
BG922	6V 18/5W bulb (parallel pins)		1.00	ea
BG923	6V 3/18W bulb (offset pins)		1.00	ea
BG924c	6V 5W SCC bulb		.95	ea
BG924b	6V 5W SBC bulb		.90	ea
BG926	6V 5W small bulb for repro sidelight	34-39	.95	ea
BG927	6V 10W SCC bulb		.95	ea
BG928	6V 18W SCC bulb		.95	ea
BG247b	Panel light bulb (6V 3W)		1.10	ea
BG929	6V 3W festoon bulb		1.10	ea
BG930	Bulb holder to fit 15mm diameter parallel pin bulb		4.40	ea
BG932	12V 21/6W bulb (parallel pins)		.60	ea
BG934c	12V 6W SCC bulb		.60	ea
BG934b	12V 6W SBC bulb		.80	ea
BG952	Lucas trafficator base seal	34-39	2.55	ea
<b>CHASSIS</b>				
BR13c	Spring shackles (c/w grease nipples, nuts & tab washers)	All	105.00	axle
BR14	Spring shackle pin bush	All	2.55	ea
BR17	Spring shackle lockwasher	All	.30	ea
BR58	Rear spring/shock absorber pin	24-39	11.45	ea
BR24	Rear spring pin bush (standard/oversize)	All	2.55	ea
BR26c	Rear spring pin cotter, washer & nut	All	1.90	ea
BR80	Spring U-bolt (front) & nyloc nuts	All	9.60	ea
BR77	Spring U-bolt (rear) & nyloc nuts	All	15.30	ea
BR75	Spring U-bolt stiffening plate (rear)	27-39	1.80	ea
BR32	Rear spring bolt (thin head) nyloc nut/washer (early)	23-26	OOS	

BE3b	Petrol cap, screw-on type (scuttle tank)	30-32	14.10	ea
BE113	Petrol filler cap (rear tank)	32-39	22.10	ea
BE962	'Prima' petrol dipstick (4 gallon, angled)	23-30	22.10	ea
BE964	'Prima' petrol dipstick (4 gallon, straight)	1930	22.10	ea
BE965	'Prima' petrol dipstick (5 gallon, straight)	30-32	22.10	ea
BE36	Petrol tap	23-30	21.90	ea
BE24t	Zenith 22FZB float chamber lid (zinc – undrilled)	23-32	18.20	ea
BE24c	Zenith 22FZ u/d carb choke flap	23-32	7.05	ea
BE24g	Zenith 22FZ choke flap spring	23-32	3.30	ea
BT8	Jet key for Zenith 22FZ carburettor	23-32	4.45	ea
BE118s	Zenith 26VA s/d carb spindle (oversize)	32-39	OOS	
BE118g	Zenith 26VA emulsion block gasket	32-39	.60	ea
BE28	Carb / inlet manifold gasket, u/d	23-32	.25	ea
BE122a	Carb / inlet manifold gasket, s/d	32-39	.60	ea
BE148d	AC petrol pump Model T diaphragm	34-39	9.20	ea
BA162	Petrol pump stud	32-39	.95	ea
BE124	Petrol pump gasket	32-39	.40	ea
BE124p	Petrol pump aperture blanking plate	Special	1.65	ea
BE252	Fuel filler hose	34-39	7.60	ea
BE134	Rear petrol tank drain plug	33-39	4.80	ea
BE135	Rear petrol tank drain plug fibre washer	33-39	.75	ea
BF26	Accelerator shaft spring (up-draught carb)	23-32	3.75	ea
BF82	Accelerator shaft spring (side-draught carb)	34-39	4.40	ea
BE903	In-line fuel filter		2.20	ea

#### Gasket sets

BA901	Magneto engine gasket set	23-28	39.95	set
BA902	Early Coil engine gasket set	28-30	37.40	set
BA903	Middle Coil engine gasket set	30-32	37.40	set
BA904	Late Coil engine gasket set	32-36	36.60	set
BA905	Late Ruby engine gasket set	36-39	36.50	set

#### TRANSMISSION

##### Flywheel & Clutch

BJ2	Rear crankshaft key	All	.65	ea
BJ3	Flywheel nut (1 <sup>1</sup> / <sub>8</sub> "	23-29	2.45	ea
BJ4	Flywheel nut lock washer (1 <sup>1</sup> / <sub>8</sub> "	23-29	.35	ea
BJ29	Flywheel nut (1 <sup>5</sup> / <sub>16</sub> "	29-39	2.90	ea
BJ30	Flywheel nut lock washer (1 <sup>5</sup> / <sub>16</sub> "	29-39	.35	ea
BJ24g	Starter ring gear, shrink-on replacement (early)	24-32	40.70	ea
BJ31g	Starter ring gear, shrink-on replacement (late)	32-39	40.70	ea
BJ21	Clutch thrust bearing (3-speed gearbox)	23-32	97.00	ea
BJ41	Clutch thrust race (4-speed gearbox)	32-39	40.80	ea
BJ8-1c	Clutch linings, c/w rivets (6 rivets/lining)	23-31	24.70	set
BJ8-2c	Clutch linings, c/w rivets (12 rivets/lining)	31-36	26.80	set
1A3238c	Clutch linings, c/w rivets (Borg & Beck)	36-39	21.20	set
1A3244c	Clutch linings, c/w rivets (Newton Bennett)	1938	22.40	set
BJ12	Clutch pressure springs	All	7.25	set
9E912	Double (inner) clutch springs	Sports	8.15	set
BJ14	Clutch withdrawal levers (early)	23-32	22.90	set
BJ33	Clutch withdrawal levers (late)	32-39	22.90	set
BJ13	Clutch lever posts	23-36	15.25	set

BJ15	Clutch lever pins	All	1.55	set
BJ35	Clutch mouse-trap springs	32-39	3.80	set
BJ43	Clutch thrust spring (2nd-hand)	32-39	3.60	ea
BJ17	Clutch cover plate bolt (early)	23-32	.35	ea
BJ37	Clutch cover plate bolt (late)	32-39	.35	ea
BJ18	Clutch cover plate tab-washer	All	.20	ea
BT921	Clutch cover plate assembly bolt	All	.50	ea
BJ5c	Clutch centre plate complete	23-36	8.15	ea
BN36c	Clutch pedal cotter, washer & nut	23-32	1.90	ea
BN39	Clutch pedal spring (3-speed gearbox)	23-32	3.20	ea
BA166	Flywheel pit cover (2nd-hand)	32-39	3.60	ea
BT920	Flywheel puller	All	12.70	ea

### Gearbox

BH3c	Gasket set (3-speed gearbox – early)	23-27	2.45	set
BH125c	Gasket set (3-speed gearbox – late)	27-32	2.45	set
BH6	Gearbox top cover gasket	23-32	.70	ea
BH226c	Gasket set (4-speed gearbox)	32-39	4.10	set
BH58	Front oil lip seal (modern replacement)	23-32	2.75	ea
BH42	1st motion shaft ball bearing (3-spd)	23-32	32.20	ea
BH56	1st motion shaft bearing rollers (3-spd)	23-32	3.05	set
BH43	3rd motion shaft ball bearing (3-spd)	23-32	10.95	ea
BH44	Layshaft ball bearings (3-spd)	23-32	8.55	ea
BH254	1st motion shaft ball bearing, grooved (4-spd)	33-39	12.65	ea
BH258	3rd motion shaft ball bearing, grooved (4-spd)	33-39	19.90	ea
BH178B	Intershaft bush (replaces roller bearing)	33-39	8.30	ea
BH36/37	Selector ball & springs	All	1.20	pair
BH269/70	Synchromesh ball & spring	33-39	.70	pair
BH69	Layshaft (3-speed)	23-32	15.95	ea
BH73/74	Layshaft keys (long & short)	23-32	2.65	pair
BH115	Gearlever knob (small)	29-33	4.70	ea
BH235	Gearlever knob (large)	29-39	4.70	ea
BH30	Drain plug	All	4.80	ea
BH29/31	Drain plug fibre washer	All	.75	ea

### Speedometer drive

BH102	Speedo cable worm drive gear (3-speed)	27-32	19.95	ea
BH203	Speedo cable worm drive gear (4-speed)	32-39	19.95	ea
BG49	Speedometer drive spring belt	24-27	3.20	ea
BG45	Speedo cable 45"	24-27	23.50	ea
BG94	Speedo cable 14½"	1927	23.00	ea
BG92	Speedo cable 16½"	27-32	23.20	ea
BG92c	Speedo cable 17½" (Coupe, etc)	29-31	23.30	ea
9E92	Speedo cable 22"	Ulster	23.40	ea
BG277	Speedo cable 51" Magmo (barrel) type speedo	34-35	23.50	ea
2H1847	Speedo cable 48" Nemag (needle) type speedo	36-39	23.50	ea
BG44b	Balls for Smiths speedometers (MA/PA, etc)	24-32	1.00	set

### Propshaft

BP29	Fabric coupling	23-34	25.40	ea
BP57	Fabric coupling double-ended bolt	23-34	2.45	ea
BP58/9	Special nuts for above	23-34	1.00	pair
BP929	3-speed to 4-speed gearbox propshaft adaptor c/w bolts	Special	23.50	ea
BP11c	Cardan pin and blocks	23-33	21.00	set

BG154f	Lucas C35A / C35M front bearing	32-39	4.00	ea
BG154r	Lucas C35A / C35M rear bush	32-39	1.25	ea
BG136	Lucas C35A / C35M drive gear	32-39	11.75	ea
BG53b	'Bacon slicer' starter motor brushes	23-29	5.00	set 2
BG76a	'Bacon slicer' starter terminal cover	23-29	4.10	ea
BG715	'Bacon slicer' starter Bendix spring	23-29	18.00	ea
BG173b	Direct drive starter motor brushes	29-39	5.40	set 2
BG3	Dynamo housing (magneto engine)	23-28	POA	
BG105	Dynamo housing (coil engine)	28-39	POA	
BG109	Dynamo housing stud	All	.60	ea
BG112	Dynamo housing cover	28-39	.75	ea
BG18c	CAV cutout cover (black plastic) & wire clip	23-26	5.10	set
BG23r	Benjamin horn ring (undrilled)	23-27	21.80	ea
BG307	Brake light switch	34-39	12.95	ea
BG307c	Rubber cover for brake light switch	34-39	3.85	ea
BD78	Starter cable (heavy duty)	All	4.40	foot
BD95	Battery terminal clamp, positive	All	4.50	ea
BD96	Battery terminal clamp, negative	All	4.50	ea
BD86	Battery cable terminal	All	1.60	ea
BG901	Battery/ignition isolator switch	All	11.75	ea
BG941	10A 1" glass fuse		.50	ea
BG942	25A 1" glass fuse		.70	ea
BG944	In-line fuse holder with 20A fuse	All	.95	ea
BG945	20A 1¼" glass fuse	All	.50	ea
BG971	Relay: 6V 10A DPDT (double pole double throw)		7.75	ea
BG972	12V 10A DPDT relay		7.75	ea
BD123c	Cable grommet pack (21 assorted)	All	4.90	ea

### Ignition

BA93	Vernier coupling (mag engine)	23-28	12.00	ea
BA94	Magneto fixing strap	23-28	23.90	ea
BG917	Spark plug, NGK 18mm (14mm hex body)	23.36	5.75	ea
BG914	Spark plug, NGK 14mm	37-39	2.95	ea
BG919	Spark plug knurled nut (brass)	All	1.00	ea
BD57	HT lead spade end terminal	All	1.25	ea
BD230	HT lead, black plastic, copper core	All	.70	foot
BG139	6 volt coil (c/w acorn nut & split washer)	28-39	18.90	ea
BG939	12 volt coil (c/w acorn nut & split washer)	Special	20.00	ea
BG139a	Long acorn nut for ignition coil	28-39	1.35	ea
BG139t	Straight push in terminal for coil or distributor cap	28-39	.60	ea
BG139r	Rubber insulator cover for coil or distributor cap	28-39	.30	ea
BG140c	Distributor cap (c/w short acorn nuts & split washers)	28-39	21.40	ea
BG140a	Short acorn nut for distributor cap	31-39	.60	ea
BD230w	HT lead terminal split washer	28-39	.20	ea
BG140j/k	Distributor cap clips (DJ4/DK4)	28-39	5.30	pair
BG140p	Contact breaker points (DJ4)	31-34	9.75	ea
BG294p	Contact breaker points (DK4)	34-39	8.25	ea
BG140t	'Top hat' bushes for points (DJ4/DK4)	31-39	1.25	ea
BG140d	Condenser	28-39	8.80	ea
BG140r	Rotor arm (DJ4)	31-34	8.15	ea
BG294r	Rotor arm (DK4)	34-39	6.50	ea
BG294b	Distributor base plate (DK4)	34-39	23.50	ea

BO2	Axle case side tube gasket	23-38	.60	ea
BO7	Axle case lockwasher	All	.25	ea
BO114	Adjuster plate gasket	29-38	.25	ea
BP32	Pinion flange nut	23-39	.40	ea
BP33	Pinion flange nut tab washer	All	.30	ea
BP34	Pinion shaft woodruff key	23-39	.70	ea
BP16	Pinion flange adjusting nut lockwasher	23-30	.35	ea
BP116	Pinion bearing retaining nut lockwasher	31-39	.35	ea
BP71	Torque tube bracket thin locknut	23-36	3.45	ea
BP70	Torque tube bracket locknut tab washer	23-36	.30	ea
BP23	Torque tube front felt seal	23-28	.80	ea
1A5523	Torque tube hanger brackets (late Ruby)	37-39	2.40	pair
2H1051	Silentbloc bush for torque tube socket	36-39	17.70	ea
BO11	Drain plug	All	4.80	ea
BO12	Drain plug fibre washer	All	.75	ea
BS6	Wheel nut (manganese bronze)	All	1.90	ea
BS6s	Wheel nut (stainless steel)	Special	2.95	ea

### Back axle bearings

BO51	Hub bearing (taper bore)	23-26	OOS	
BO89	Hub bearing	26-38	7.95	ea
BO89s	Hub bearing (sealed)	26-38	8.70	ea
2K5678	Hub bearing (late axle)	38-39	7.65	ea
BP27	Front (taper) end (ball)	23-29	11.25	ea
BP27s	Front (taper) end ball bearing (sealed)	Special	18.40	ea
BP81	Front (taper) end (A/C)	29-30	28.60	ea
BP96	Front (taper) end (ball)	30-39	11.25	ea
BP96s	Front (taper) end ball bearing (sealed)	Special	18.40	ea
BP26	Intermediate (thrust)	23-29	16.40	ea
BP84	Intermediate (thrust)	29-30	17.20	ea
BP101	Intermediate (AC thrust)	30-39	78.20	pair
BP25	Gear end (roller)	23-29	28.60	ea
BP85	Gear end (ball)	29-34	10.95	ea
BP183	Gear end (roller)	34-39	22.30	ea
BO37	Diff carrier thrust	23-28	15.90	ea
BO36	Diff carrier ball	23-28	32.20	ea
BO109	Diff carrier AC thrust	29-39	24.75	ea

### ELECTRICAL

BG1b	CAV DF dynamo brushes	1923	4.85	set 3
BG29b	CAV DFL dynamo brushes	23-28	5.70	set 3
BG29f	CAV DFL front bearing	23-28	5.00	ea
BG29r	CAV DFL rear bearing	23-28	2.75	ea
BG29t	CAV DFL third brush ring	23-28	19.80	ea
BG29c	CAV DFL end cover (nickel)	23-28	24.30	ea
BG8	CAV DF/DFL dynamo securing oiler/bolt	23-28	3.90	ea
BG13	CAV DF/DFL front felt seal	23-28	1.10	ea
BG98b	CAV DE/DEL dynamo brushes	28-32	5.70	set 3
BG98f	CAV DE/DEL front bearing	28-32	7.55	ea
BG98r	CAV DE/DEL rear bearing	28-32	2.05	ea
BG154b	Lucas C35A dynamo brushes	32-34	5.40	set 3
BG293b	Lucas C35M dynamo brushes	34-39	6.10	set 3

BP119a	Cardan joint cover (rubber)	23-33	5.10	ea
BP20	Cardan housing lockwasher	23-33	.30	ea
1A7306	Hardy-Spicer propshaft	34-39	115.00	ea
1A7306a	Hardy-Spicer propshaft (bespoke length)	Special	OOS	
BP169	Hardy-Spicer u/j needle bearing assembly	34-39	9.80	ea
BP143	Prop shaft 'D' type head bolt (early)	33-35	1.80	ea
BP171	Prop shaft 'D' type head bolt (late)	35-39	1.80	ea

### BRAKES

BL76/77	Brake cams	23-36	13.00	pair
BL69	Brake cam oilite bush	23-36	1.80	ea
1A4130/1	Brake cams (Girling, front)	36-39	15.25	pair
1A7263/4	Brake cams (Girling, rear)	36-39	15.25	pair
1A4126	Brake cam oilite bush (Girling)	36-39	1.55	ea
BL57	Brake lever	26-36	OOS	
1A4132/3	Brake lever (long – Girling front)	36-39	OOS	
BO166/7	Brake lever (Girling – rear)	36-39	OOS	
BL35c	Brake lever cotter, washer & nut	All	1.90	ea
BL38	Brake shoe spring (6")	23-26	2.05	ea
BL58	Brake shoe spring (7")	26-36	1.25	ea
1A4655	Brake shoe spring (for Girling shoes without studs)	36-39	1.50	ea
1A4150c	Brake lever springs (Girling)	36-39	OOS	
BT958	Brake shoe spring hook	All	14.20	ea
BL27	Brake linings & rivets (6")	23-26	18.40	axle
BL55	Brake linings & rivets (7"x1")	26-32	17.80	axle
BL73	Brake linings & rivets (7"x1¼")	32-36	21.40	axle
1A4120	Brake linings & rivets (Girling)	36-39	20.50	axle
BL29	Brake shoe pivot (front, threaded)	23-30	2.05	ea
BL68	Brake shoe pivot (front, rivetted)	30-36	2.55	ea
BO77	Brake shoe pivot (rear)	23-36	2.25	ea
BL965	Brake backplate c/w rivets	26-36	OOS	
2K5258	Girling backplate lockwasher	36-39	.65	ea
BK55	Front brake cable swivel clevis pin	30-39	1.20	ea
BL54	Brake shoe (7"x1")	26-32	5.90	ea
BL72	Brake shoe (7"x1¼")	32-35	15.30	ea
C1-167	Brake shoe (7"x1¼" – offset pivot)	35-36	12.95	ea
C1-188/9	Brake shoe (Girling, with spring anchor studs)	36-37	9.40	pair
C1-312	Brake shoe (Girling, without studs)	37-39	5.90	ea
BL954	End caps for aluminium brake shoes	26-35	2.80	set 4
BL53	Brake drum (7" x 1")	26-32	7.50	ea
BL71	Brake drum (7" x 1¼")	32-36	14.10	ea
1A4664	Brake drum (Girling)	36-39	39.90	ea
BL67	Brake drum retaining countersunk screw	28-39	.30	ea
BK31	Front brake cable	All	22.20	ea
BK31a	Front brake cable (adjustable)	All	28.30	ea
BN65	Rear brake cable (fork-ball, adjustable)	23-36	21.20	ea
C1-197	Rear brake cable (fork-fork, adjustable)	36-39	21.20	ea
BN18	Brake cable clevis pin	All	1.20	ea
BR945	Rear brake cable pulley (Ruby)	34-39	2.35	ea
BK25	Handbrake ratchets (early)	23-30	5.90	pair
BK49	Handbrake ratchets (late)	30-39	5.90	pair
BK17	Handbrake bracket clevis pin	23-30	2.35	ea

BM140	Brake pedal fulcrum pin	23-38	OOS	
BN6	Brake pedal clevis pin	All	1.20	ea
BN9	Brass wingnut (foot brake adjustment)	23-36	OOS	
1A7633	Girling rear brake expander rubber boot	38-39	3.65	ea
BG307	Brake light switch	34-39	12.95	ea
BG307c	Rubber cover for brake light switch	34-39	3.85	ea
BN12	Cross-shaft spring, uncoupled brakes	23-30	3.20	ea
BN73	Cross-shaft spring, coupled brakes	30-39	3.20	ea
BN61c	Cross-shaft cotter, washer & nut	30-39	1.90	ea
9E93	Rear brake cable brackets for use with flattened springs	Sports	4.70	pair
<b>FRONT AXLE</b>				
BM96a	Steering arm (incl. p&p)	All	75.00	ea
9C134a	Steering arm (lowered suspension)	Sports	75.00	ea
BM107c	Drag link set (ball pin, cups, spring, castle nut & split-pin)	All	13.70	set
BL9c	Full kingpin set (Austin)	23-36	34.90	set
1A4134c	Full kingpin set (Girling)	36-39	36.20	
BL7/8	Kingpin bushes (manganese bronze)	23-36	OOS	
1A4128/9	Kingpin bushes (manganese bronze; Girling)	36-39	4.70	pair
BL10c	Kingpin cotter, nut & washer	All	1.30	ea
BL48	Kingpin threaded cap	23-36	1.90	ea
1A4135	Front hub Welch plug	36-39	.45	ea
BT924	Kingpin greaser	All	9.80	ea
BL41	Hub bearing (small)	All	3.85	ea
BL41s	Hub bearing (small – sealed)	All	5.90	ea
BL40	Hub bearing (taper bore)	23-26	OOS	
BL63	Hub bearing (large)	26-39	7.95	ea
BL63s	Hub bearing (large – sealed)	26-39	8.70	ea
BL62	Hub felt seal	All	1.60	ea
BL62a	Hub lip seal (modern replacement)	26-39	2.85	ea
BL17	Hub felt seal plate (2nd-hand)	All	2.40	ea
BL20	Hub bearings spacer (2nd-hand)	All	2.40	ea
BL23	Wheel stud & rivets	All	3.85	ea
BL46	Hub gasket	All	.50	ea
BL4	Front hub castle nut	All	4.15	ea
BL19	Hub-clamping screw	23-28	.30	ea
BL21	Front hub cap with Austin script	23-26	5.90	ea
BL100	Front hub cap (2nd-hand)	26-39	2.35	ea
BL45	Outer hub grease plug	All	1.15	ea
BR13c	Spring shackles (c/w grease nipples, nuts & tab washers)	All	105.00	axle
BR14	Spring shackle pin bush	All	2.55	ea
BR17	Spring shackle lockwasher	All	.30	ea
BM197	Radius arm waisted bolt		OOS	
BM196	Radius arm waisted bolt spring	34-39	2.85	ea
BM116	Radius arm ball pivot bushes	All	6.05	pair
BM114	Radius arm nut	All	2.20	ea
BM115	Radius arm spring washer	All	.05	ea
B8-63/4e	Radius arm ends for lowered suspension	Sports	94.00	pair
BM84	Track rod end pin	All	2.65	ea
BM95	Track rod end bush	All	1.20	ea
BM85c	Track rod end cotter, washer & nut	All	1.80	ea

BM84c	Track rod end kit (2 pins, 2 bushes, 2 cotters, washers & nuts)	All	11.30	set
BM93	Track rod lever nut	All	.30	ea
BR51	1/8" BSP angled grease nipple	23-36	.60	ea
2H1129	5/16" BSF angled grease nipple (Girling front axle)	36-39	.90	ea
BS6	Wheel nut (manganese bronze)	All	1.90	ea
BS6s	Wheel nut (stainless steel)	Special	2.95	ea
<b>BACK AXLE</b>				
BP31k	Crown wheel & pinion (4.9:1, early or late crown-wheel)	23-29	375.00	set
BP88k	Crown wheel & pinion (4.9:1 'screw-in')	29-30	375.00	set
BP98k	Crown wheel & pinion (4.9:1 short)	30-31	375.00	set
BP117k	Crown wheel & pinion (5.25:1)	31-37	375.00	set
BP178k	Crown wheel & pinion (5.25:1, 1 1/8" shoulder)	31-37	375.00	set
BP120k	Crown wheel & pinion (5.67:1)	Special	375.00	set
BO18	Halfshaft (short, .875 journal)	23-30	143.00	ea
BO128	Halfshaft (short, .890 journal)	30-31	143.00	ea
BO136	Halfshaft (long)	31-38	143.00	ea
BO45	Rear hub, outer (EN24T)	23-38	82.00	ea
BO128t	Halfshaft with long taper (short, .890 journal)	Special	149.00	ea
1A7300a	Halfshaft (long, extended taper)	31-39	149.00	ea
1A7661a	Rear hub, outer (extended taper)	Special	87.00	ea
BT24	Hub puller	All	12.75	ea
BO88	Hub felt seal	All	1.60	ea
BO88a	Hub lip seal (modern replacement)	26-38	2.85	ea
2K5710	Hub felt seal (late axle)	38-39	1.60	ea
2K5710a	Hub lip seal (late axle - modern replacement)	38-39	2.95	ea
BO47	Hub felt seal plate (2nd-hand)	All	2.40	ea
BO78	Outer hub grease plug	All	1.15	ea
BO75	Hub gasket	All	.50	ea
BO22	Halfshaft Woodruff key	All	1.65	ea
1A7212a	Key for long-taper halfshaft	Special	1.35	ea
BO901	Halfshaft replacement kit (gaskets, tab washers, Woodruff key, lip seals)	All	10.55	ea
BO902	Rear hub rebuild kit (gasket, tab washer, Woodruff key, lip seal)	All	5.40	ea
BO903e	Rear axle rebuild kit (early banjo axle)	23-26	21.00	ea
BO903v	Rear axle rebuild kit (vintage banjo axle)	26-29	24.95	ea
BO903s	Rear axle rebuild kit (screw-in torque tube axle)	29-30	23.75	ea
BO903b	Rear axle rebuild kit ('Long-nose' banjo axle)	30-32	23.00	ea
BO903d	Rear axle rebuild kit (D-type axle)	32-39	21.00	ea
BO92	Hub-clamping screw	23-38	.30	ea
BO52	Hub retaining nut (EN16T)	23-38	3.45	ea
BO53	Hub retaining nut tab washer	23-38	.40	ea
2H2381	Hub bearing retaining nut tab washer (late axle)	38-39	.60	ea
BO54	Wheel stud & rivets	All	3.85	ea
BO19	Halfshaft castle nut (small)	23-31	4.15	ea
BO138	Halfshaft castle nut (large)	31-38	4.15	ea
2K6952	Halfshaft nut (late axle)	38-39	4.20	ea
BO43a	Halfshaft lip seal (replaces felt washer & steel cup, etc)	23-38	1.95	ea
BO23	Diff carrier / halfshaft bush	23-31	3.30	ea
BO98	Diff carrier tab washer	28-38	.35	ea